



HABITAT UTILISATION OF LION-TAILED MACAQUES USING REMOTE SENSING AND GIS

JOSEPH. J. ERINJERY¹, MEWA SINGH¹ AND GIRISH GOPINATH²



1- UNIVERSITY OF MYSORE, 2- CENTRE FOR WATER RESOURCES DEVELOPMENT AND MANAGEMENT



Lion-Tailed Macaque

- Tropical evergreen
- Habitat specialist
- Largely linear dominance structure
- Largely arboreal
- Inter birth interval- Almost 2.5 years
- Infant care- More in LTM
- Group size- Tends to cluster around mean
- Ranging- More in LTM
- Social system- Unimale x Multi female
- Male-male interactions – less tolerant
- Less flexible
- More K-selected

Study area

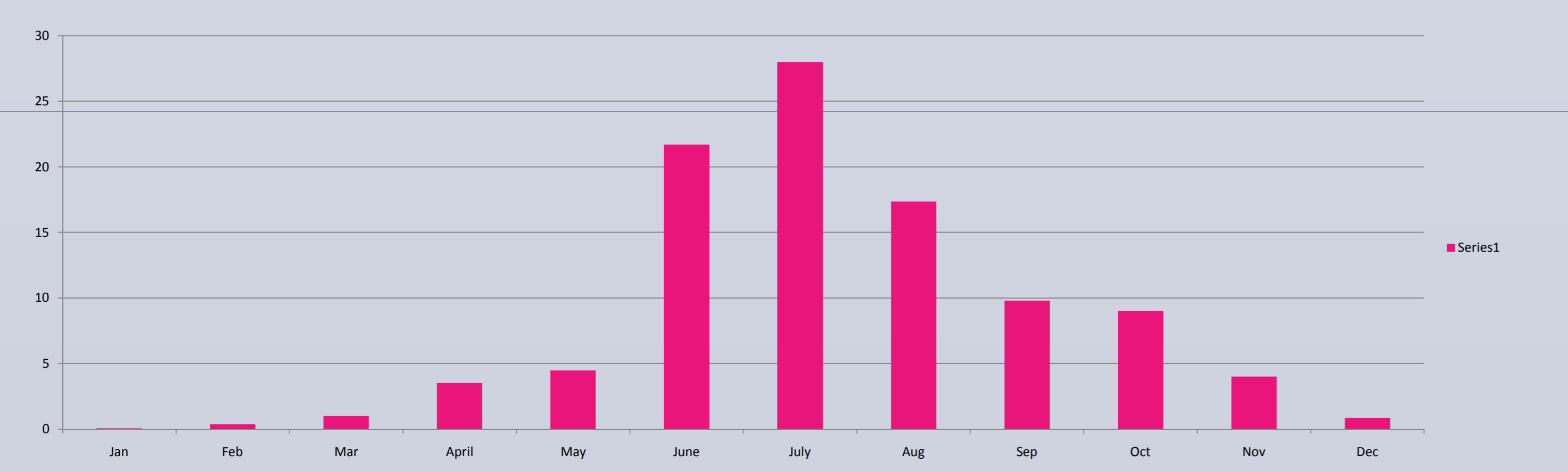
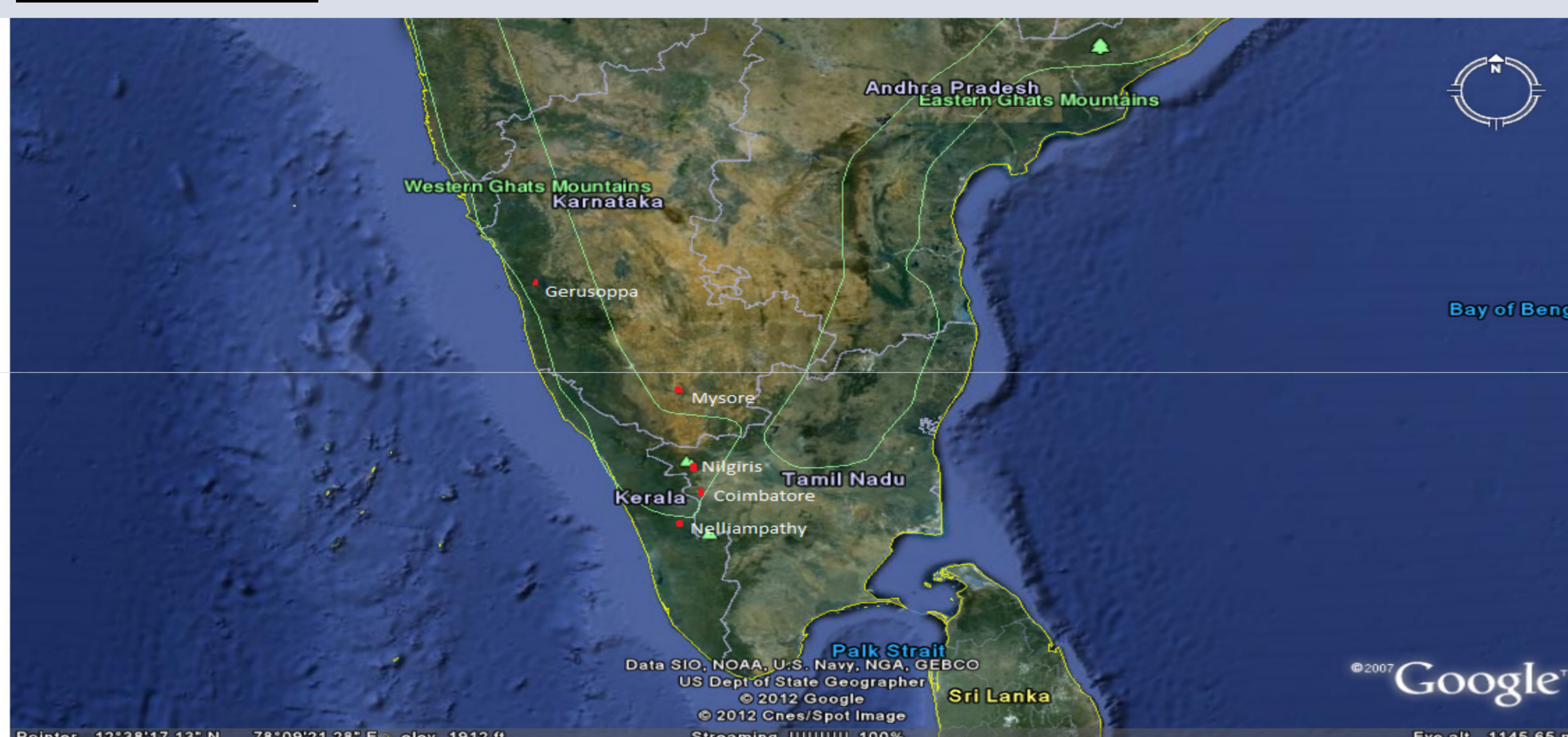
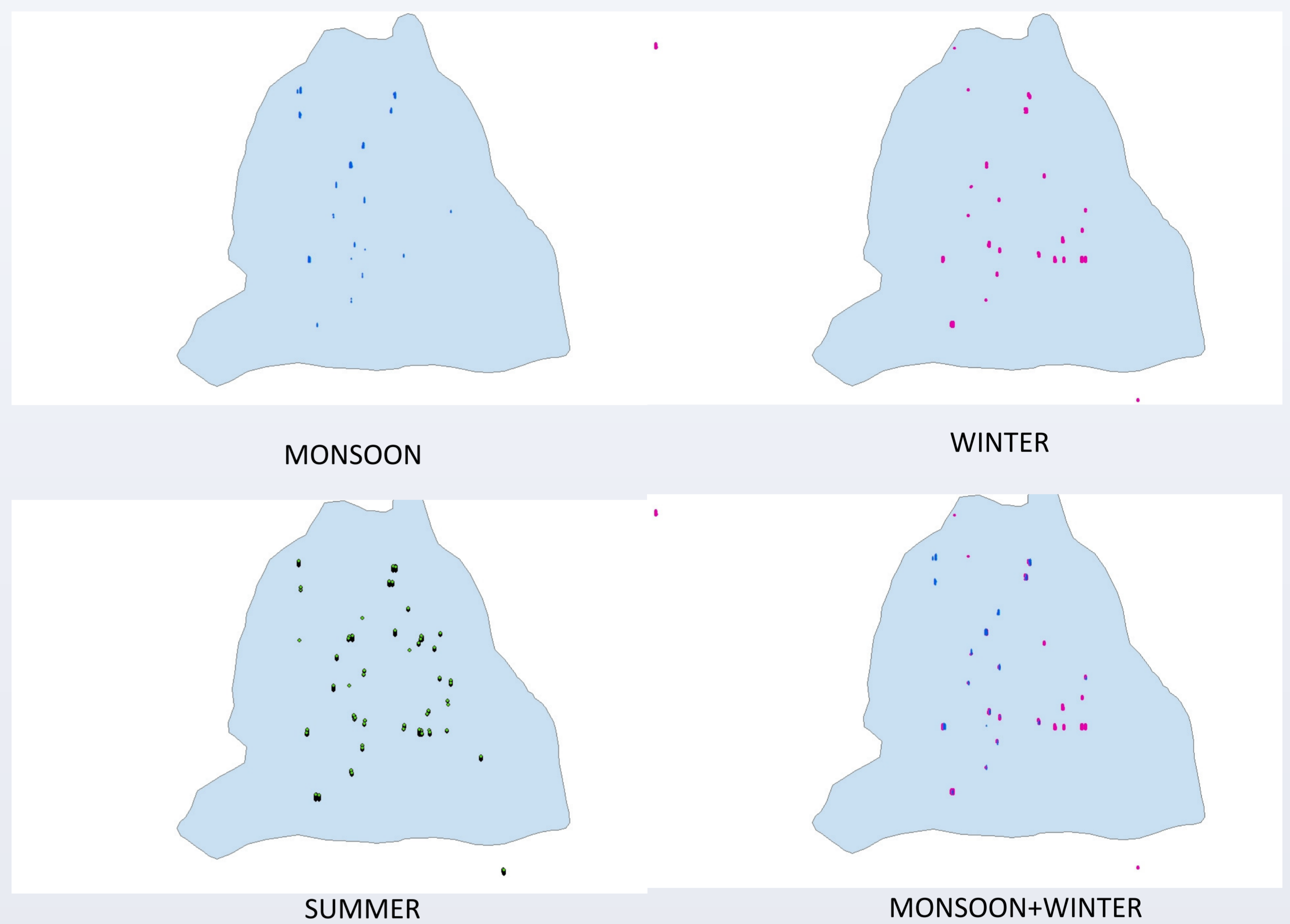
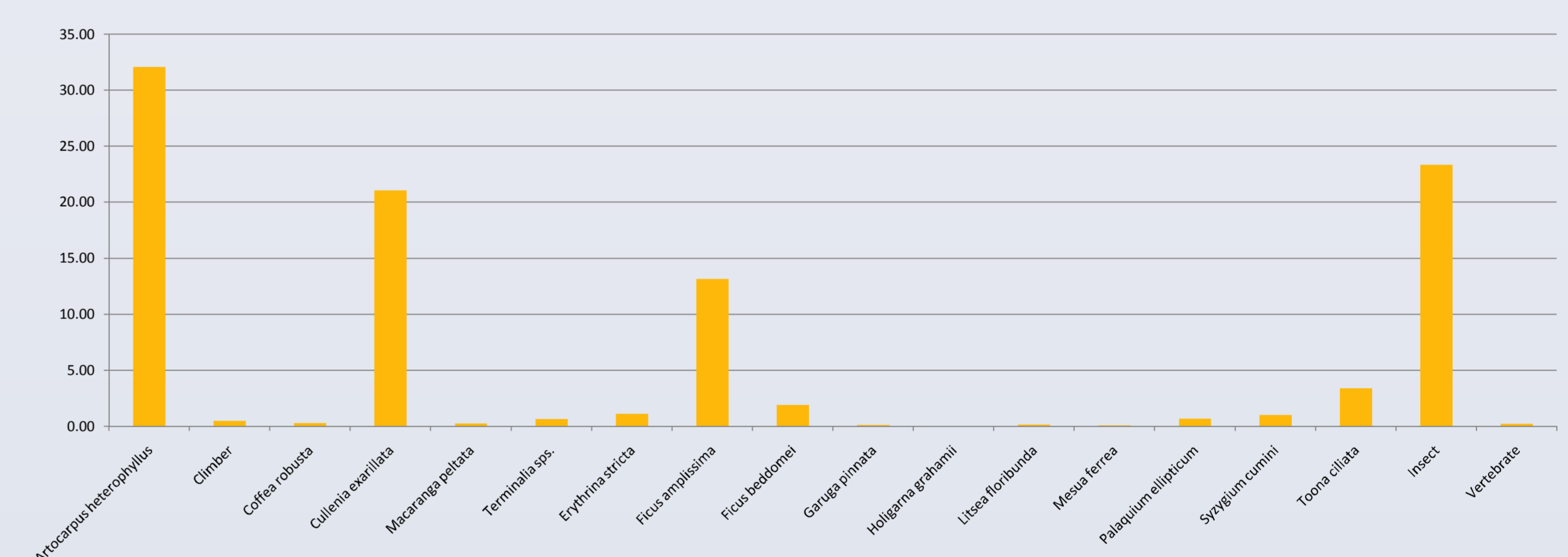


Fig. 1- Rainfall pattern of the study area

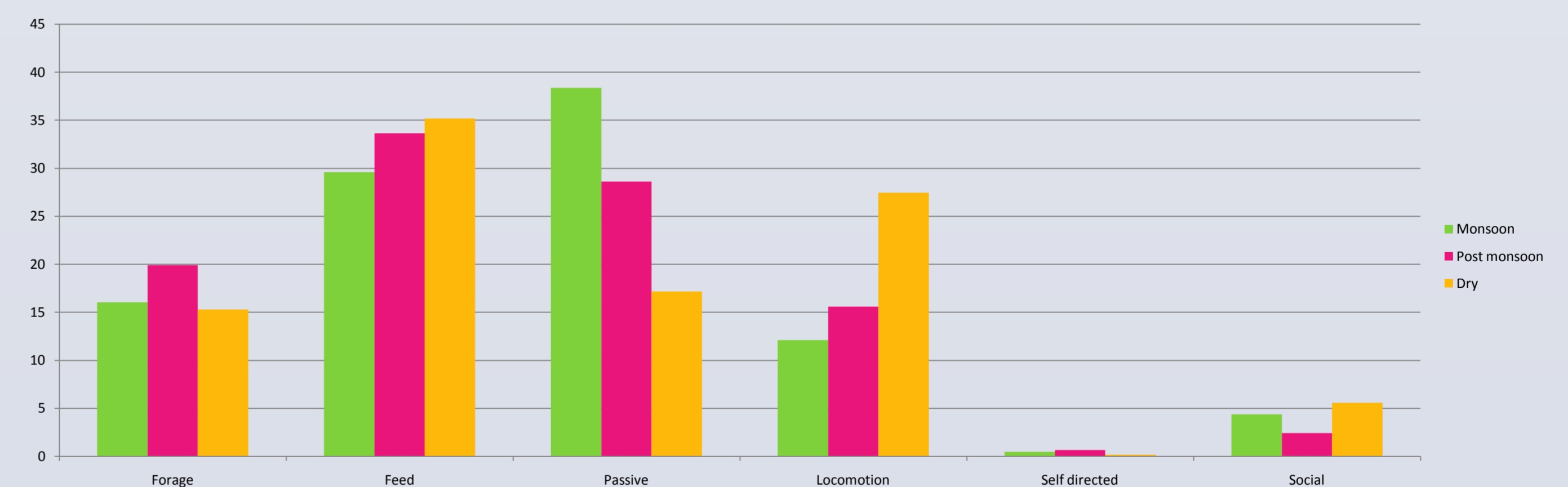
Ranging



Resources used by lion-tailed macaques



Behaviour of lion-tailed macaques season wise



Remote sensing and GIS applications

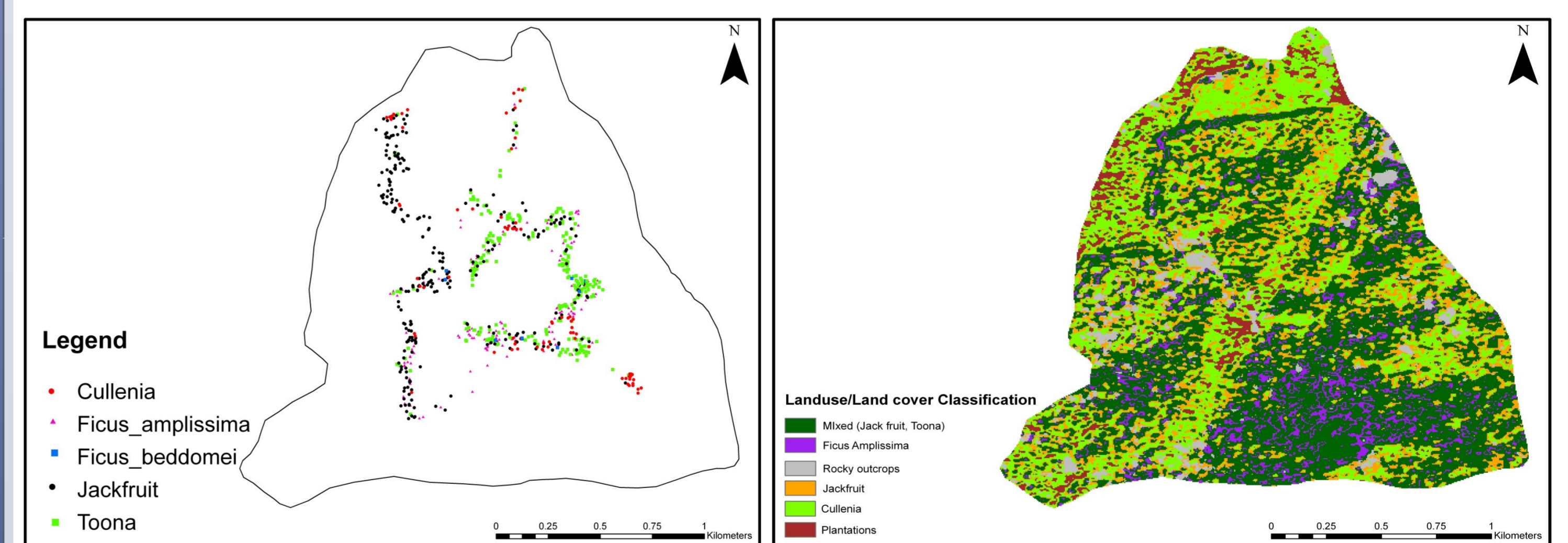


Fig.2- The GPS locations of major trees in LTM diet

Fig.3- Land use land cover classification of major trees in LTM diet for assessing resource distribution

Results

- Expected that the ranging behaviour of animals would be correlated with the distribution of the resources and the climatic variables.

e-mail- joerin@gmail.com