

Geospatial data and web based dissemination system for India datasets

P. S. Acharya, Scientist G
NRDMS/ NSDI Division
Department of Science & Technology, New Delhi

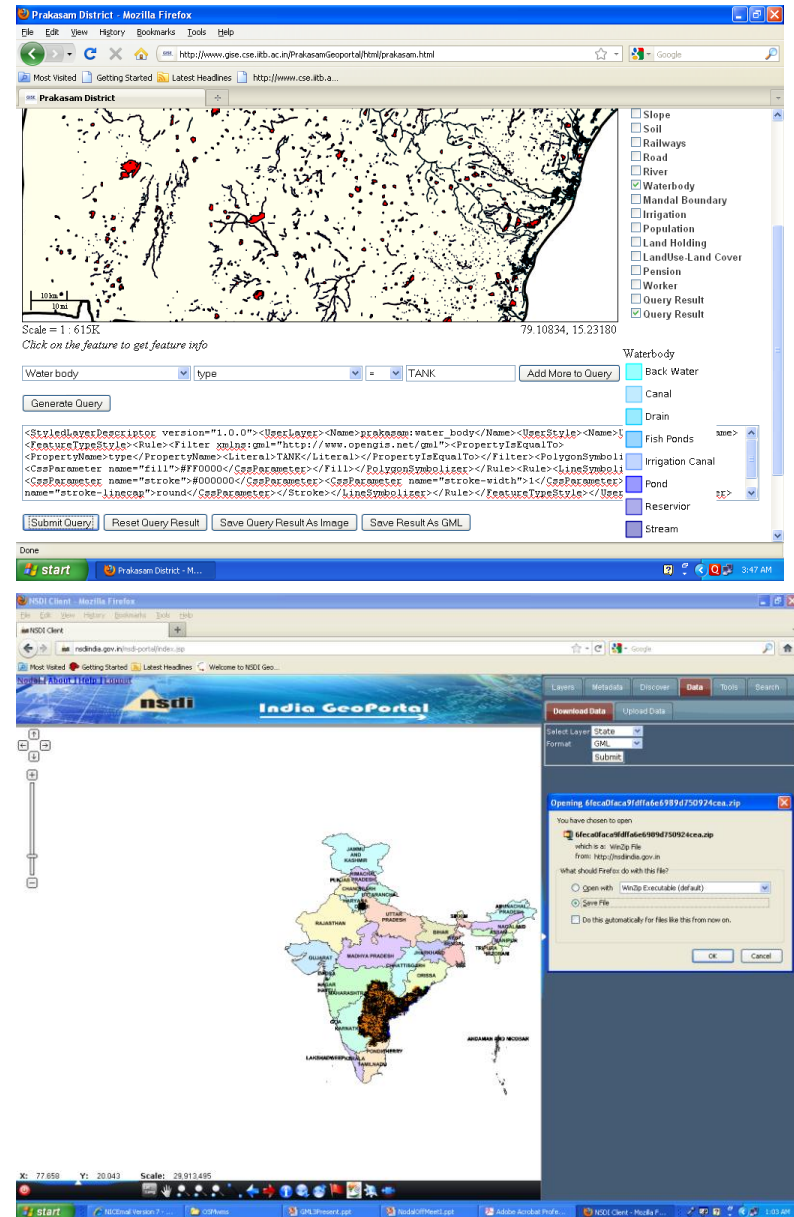
International Regional Science Meeting
Land Cover and Land Use Change in South Asia
Karunya University, Coimbatore, Tamil Nadu, India
January 10-13, 2013

Contents

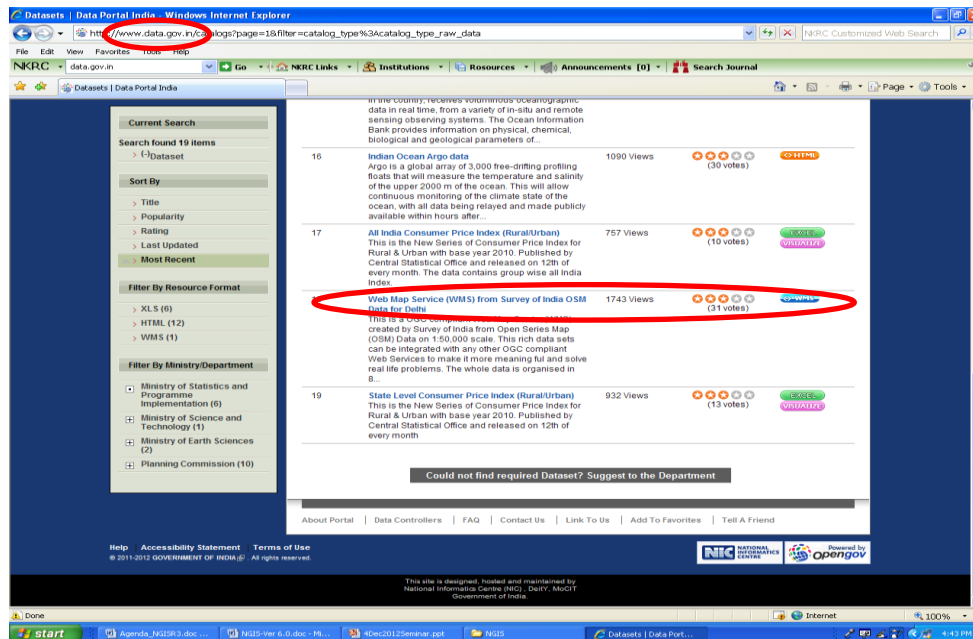
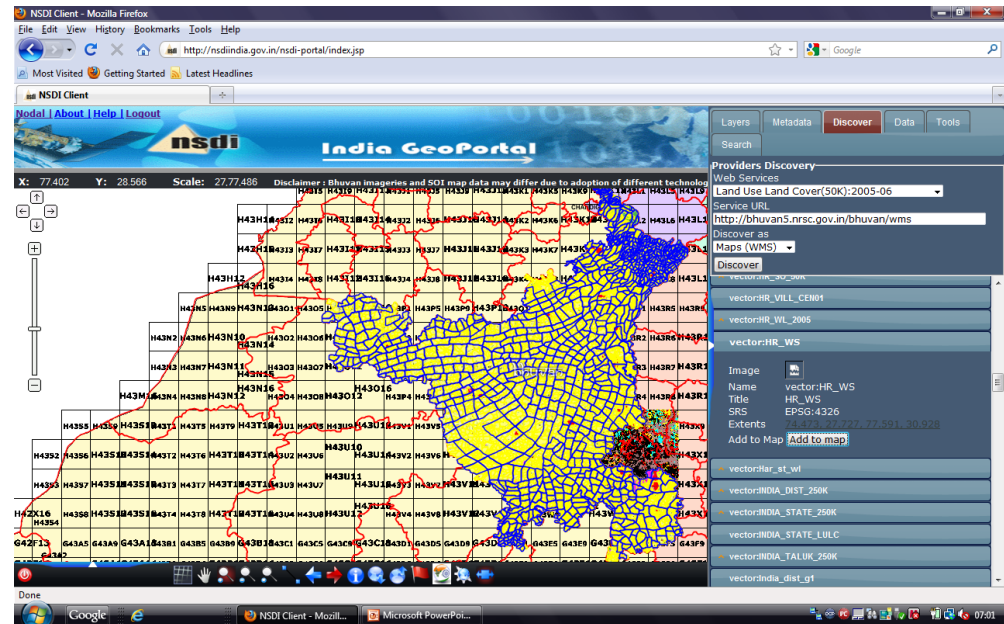
- Introduction
- NSDI and State SDI - Present status
- NRDMS Programme (Applications)
- National GIS (proposed)
 - Data assets
 - Platform (Registry/ Product Development)
 - Training
- Issues

NSDI – Current Status

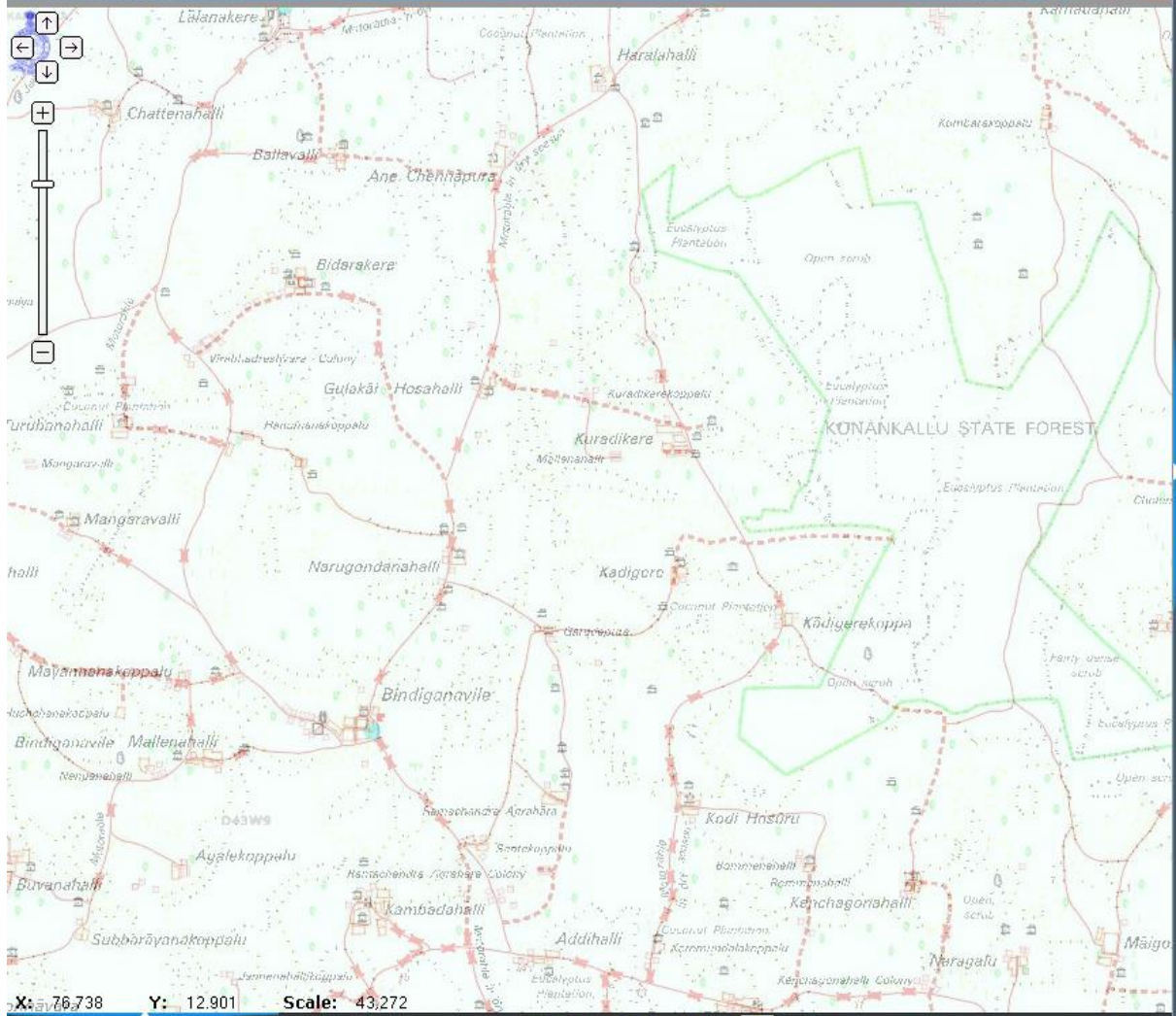
- Advanced Lab on GISE at IIT Bombay
 - Prakasam District Geo Portal – December 2010
- Interoperable WMS from Bhuvan, Surveykshan, and FSI portals accessed through India Geo Portal
- NSDI Aspiration Document
- NSDI Standard documents (Metadata 2.0, Content Standard - Soil), GML Relay, OGC standards for WMS/ WFS/ GML
- National Data Sharing & Accessibility Policy – March 2012 (data.gov.in)



(Bhuvan vector data
As WMS on India
Geo portal)



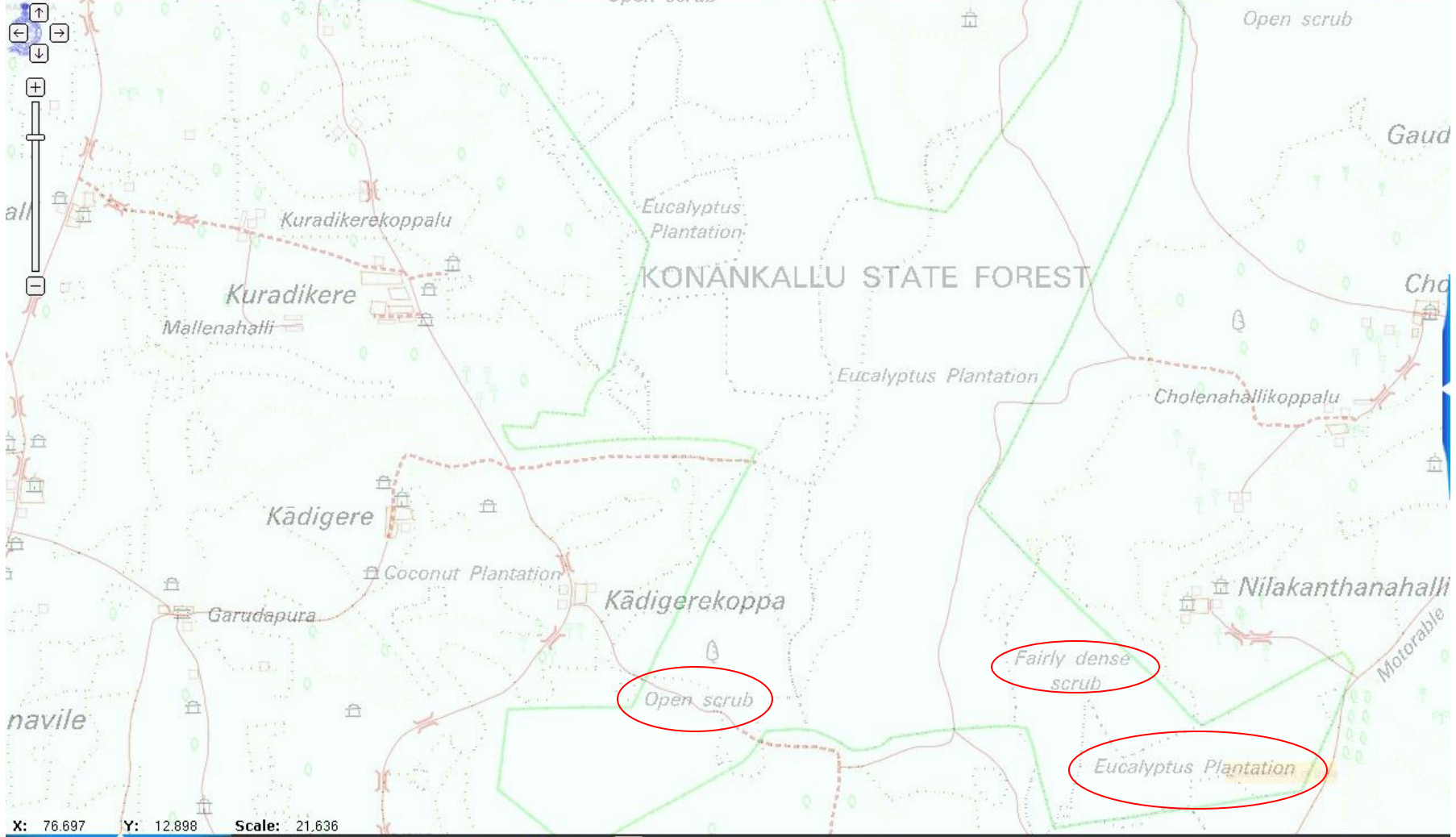
Surveykshan WMS
on data.gov.in



X: 76,738 Y: 12,901 Scale: 43,272

Layers Metadata Discover Data Tools Search

- Roads_KGDC
- Habitation_KGDC
- Landcovers_KGDC
- BoundariesMH
- ContourMH
- HabitationMH
- HydrographyMH
- LandcoverMH
- RailwayMH
- RoadsMH
- UtilitiesMH
- BoundariesAPradesh
- ContourAPradesh





X: 78.402 Y: 13.873 Scale: 46,902

Disclaimer : Bhuvan imageries and SOI map data may differ due to adoption of different technologies.

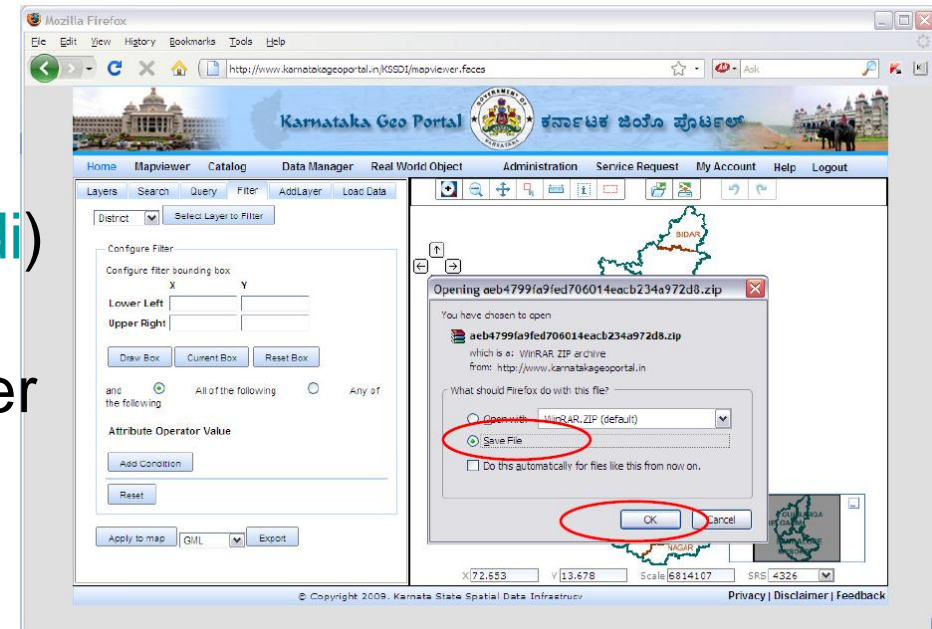
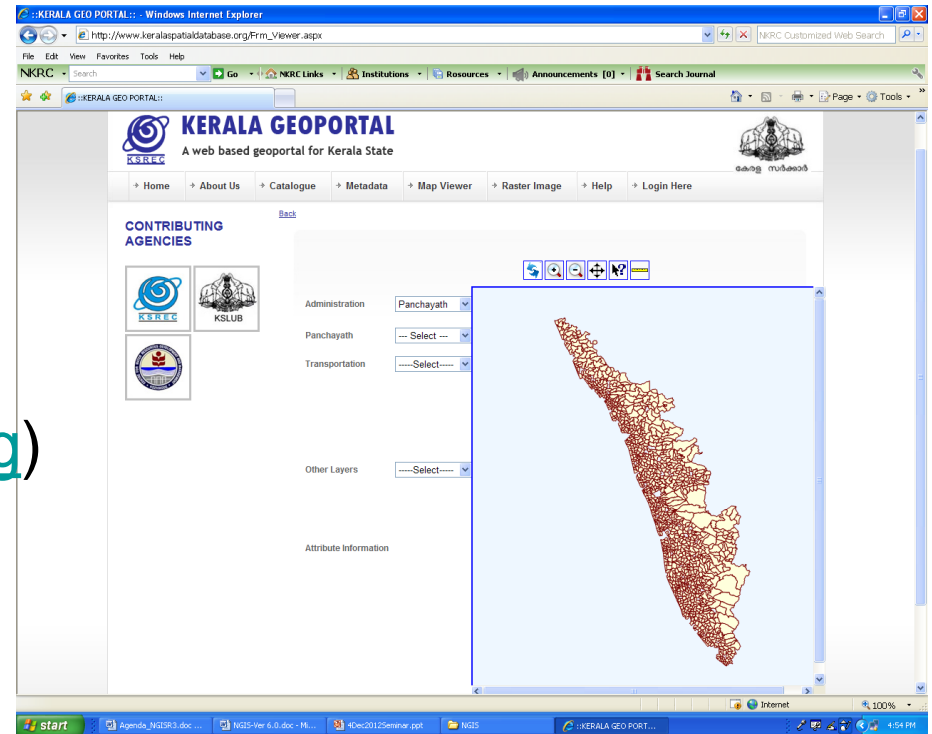


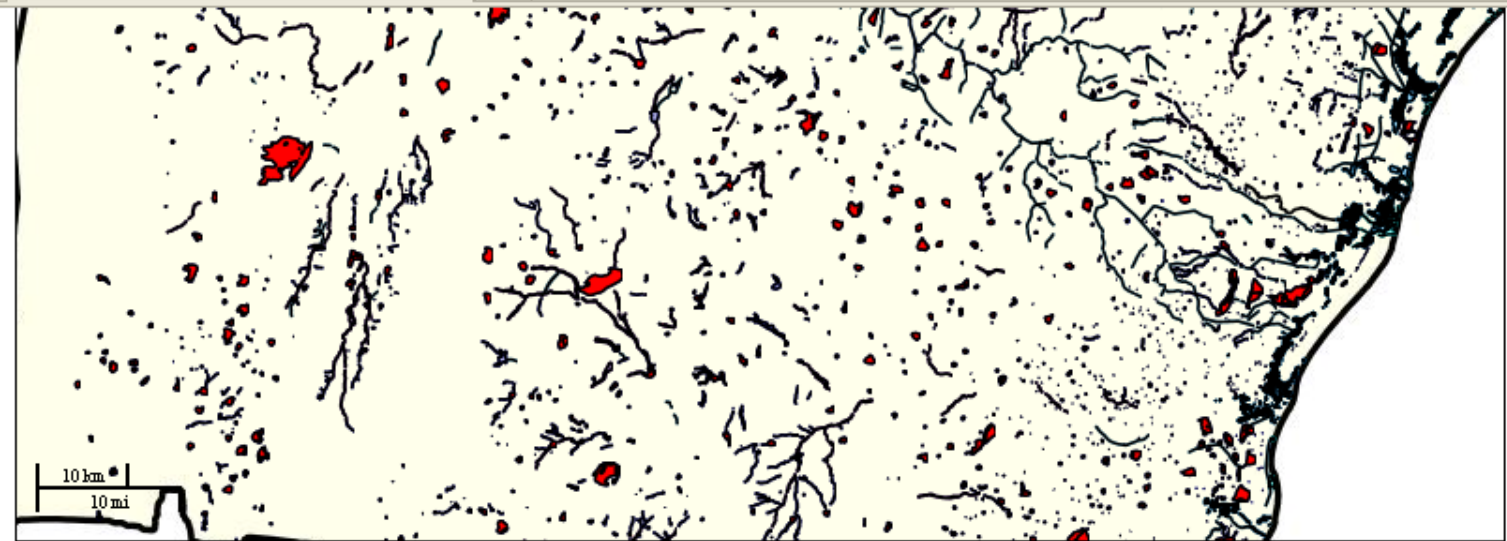
ID	description	name	boundedBy	LINE_ELEME	STARTING_X	STARTING_Y	LINE_LEVEL	LINE_STYLE	LINE_WEIGH	LINE_COLOR	FEATURE_CO
				557	78.38874857	13.88759200	25	0	1	3	78.388748574256 [ol
				750	78.33761029	13.86162574	27	0	1	3	78.337610292434 [ol
				722	78.34783945	13.86885001	27	0	1	3	78.347839450836 [ol
				723	78.34783945	13.86885001	27	0	1	3	78.347839450836 [ol
				718	78.34820628	13.87345056	27	0	1	3	78.348206281662 [ol



State SDI Initiative

- Kerala Geo portal (KSREC, KSLUB, CWRDM) (www.keralaspacialdatabase.org)
- Karnataka State Geo Portal (December 2009) (www.karnatakageoportal.in)
- North East SDI Geo Portal (agnee.tezu.ernet.in:8004/nesdi)
- Other State SDI projects under implementation (West Bengal, Haryana, Uttarakhand, J & K)





- Slope
- Soil
- Railways
- Road
- River
- Waterbody
- Mandal Boundary
- Irrigation
- Population
- Land Holding
- LandUse-Land Cover
- Pension
- Worker
- Query Result
- Query Result

Scale = 1 : 615K

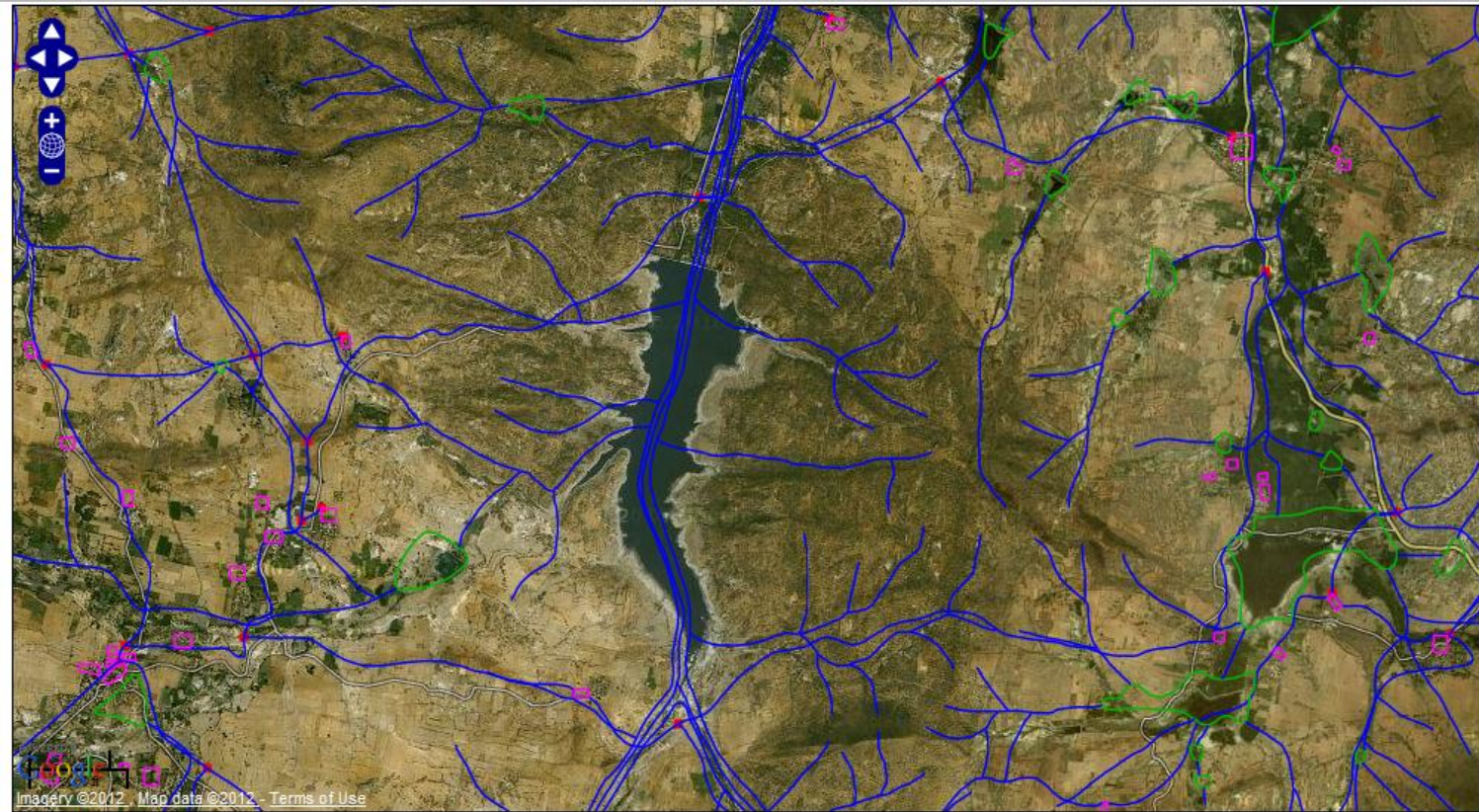
79.10834, 15.23180

Click on the feature to get feature info

Water body =

```
<StyledLayerDescriptor version="1.0.0"><UserLayer><Name>prakasam:water_body</Name><UserStyle><Name>I
<FeatureTypeStyle><Rule><Filter xmlns:gml="http://www.opengis.net/gml"><PropertyIsEqualTo>
<PropertyName>type</PropertyName><Literal>TANK</Literal></PropertyIsEqualTo</Filter><PolygonSymboli
<CssParameter name="fill">#FF0000</CssParameter></Fill></PolygonSymbolizer></Rule><Rule><LineSymboli
<CssParameter name="stroke">#000000</CssParameter><CssParameter name="stroke-width">1</CssParameter>
name="stroke-linecap">round</CssParameter></Stroke></LineSymbolizer></Rule></FeatureTypeStyle></User
```

- Waterbody
- Back Water
 - Canal
 - Drain
 - Fish Ponds
 - Irrigation Canal
 - Pond
 - Reservoir
 - Stream



- Base Layer
- Google Satellite
 - Google Hybrid
- Layers
- Road Network: Nodes
 - Road Network: Edges
 - Habitation
 - Tanks
 - Streams

- Habitation
- Tanks
- Streams

Scale = 1 : 27K

78.29287, 13.90857

Click on the feature to get feature info

Get GML for Selected layer Get XSD for Selected layer

Transferring data from www.gise.cse.iitb.ac.in...

Himachal Pradesh Water Portal (IIT Delhi)

http://gisserver.civil.iitd.ac.in - Basinwise Model Results - Microsoft Internet Explorer

Basinwise Model Results

Home Data Management

Model Results with IMD data

Virgin run
 Baseline

Select Parameter
Water Balance

Select Basin
Chenab (105)

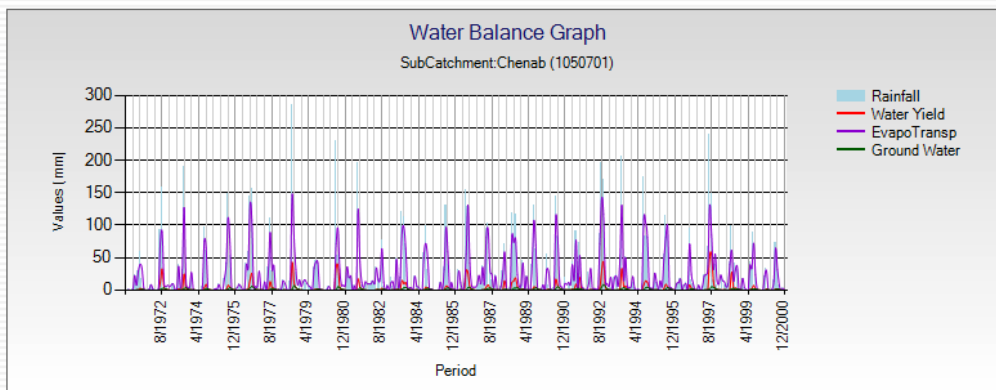
Select Catchment
Chenab (10507)

Select Sub-catchment
Chenab (1050701)

Select Watershed

Select Period: (Start-End)
1971 2000

Show Graph
Show Table



Done

Internet



Microsoft PowerPoint ...

INRM_8_2.pdf

Hydrological Informat...

http://gisserver.civil.i...



1:28 AM

Election 2009 Bankura, West Bengal



IIT KHARAGPUR GEOSERVICE

UserID:

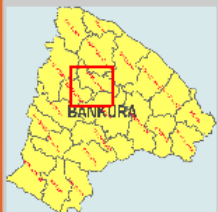
Password:

Login

GIS Laboratory, School of Information Technology, Indian Institute of Technology, Kharagpur 721302, India

Acknowledgement : NRDMS Division, Department of Science & Technology (DST), Technology Bhawan, New Delhi, India

Disclaimer: Information available in this system has been provided by NRDMS cell, DM office, Bankura, West Bengal

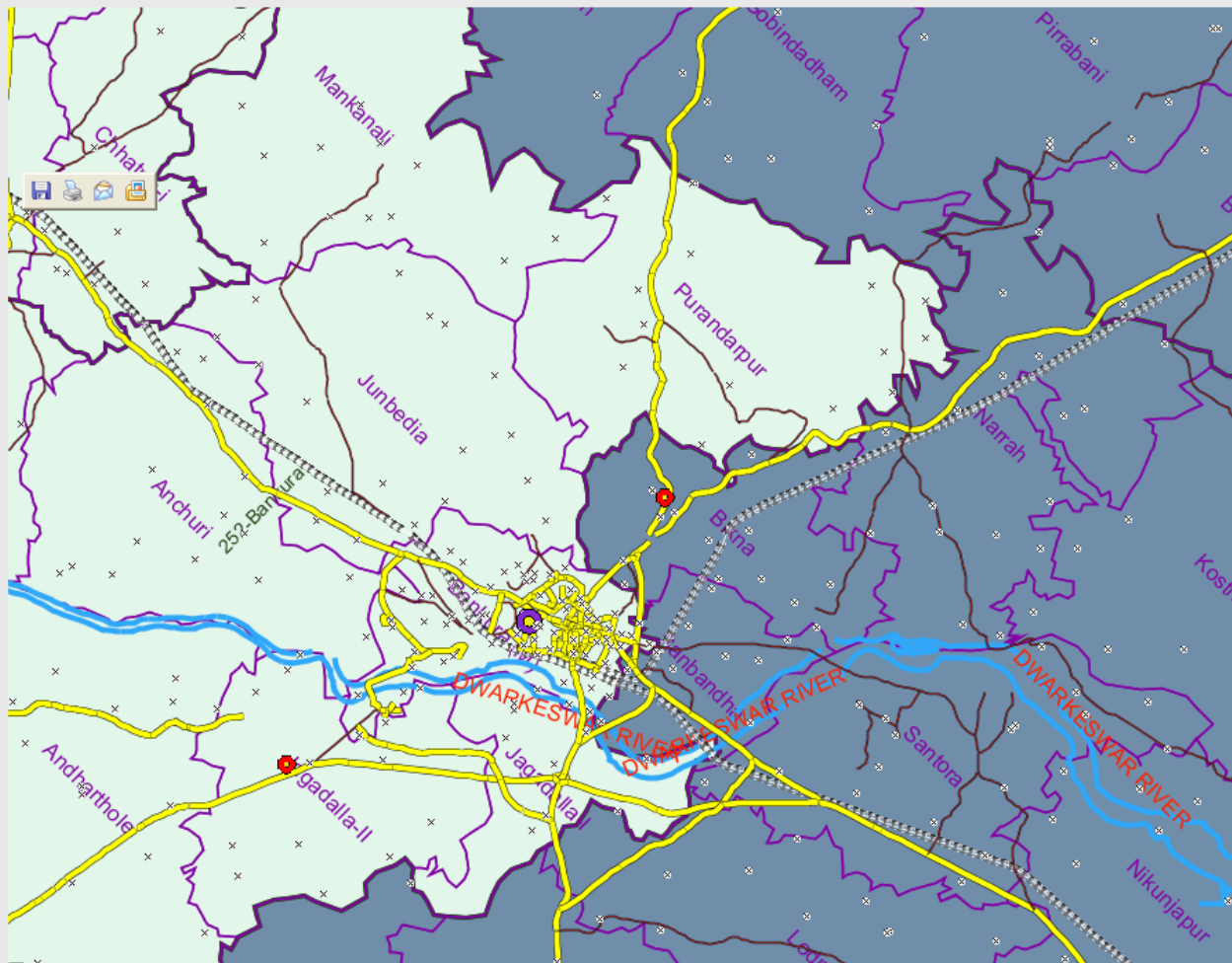


north: 23.35096005
west: 86.96527110
south: 23.15210385
east: 87.20389856

set bbox

Scale: 1:102859

भारतीय प्रौद्योगिकी संस्थान खड़गपुर
Indian Institute of Technology
Kharagpur



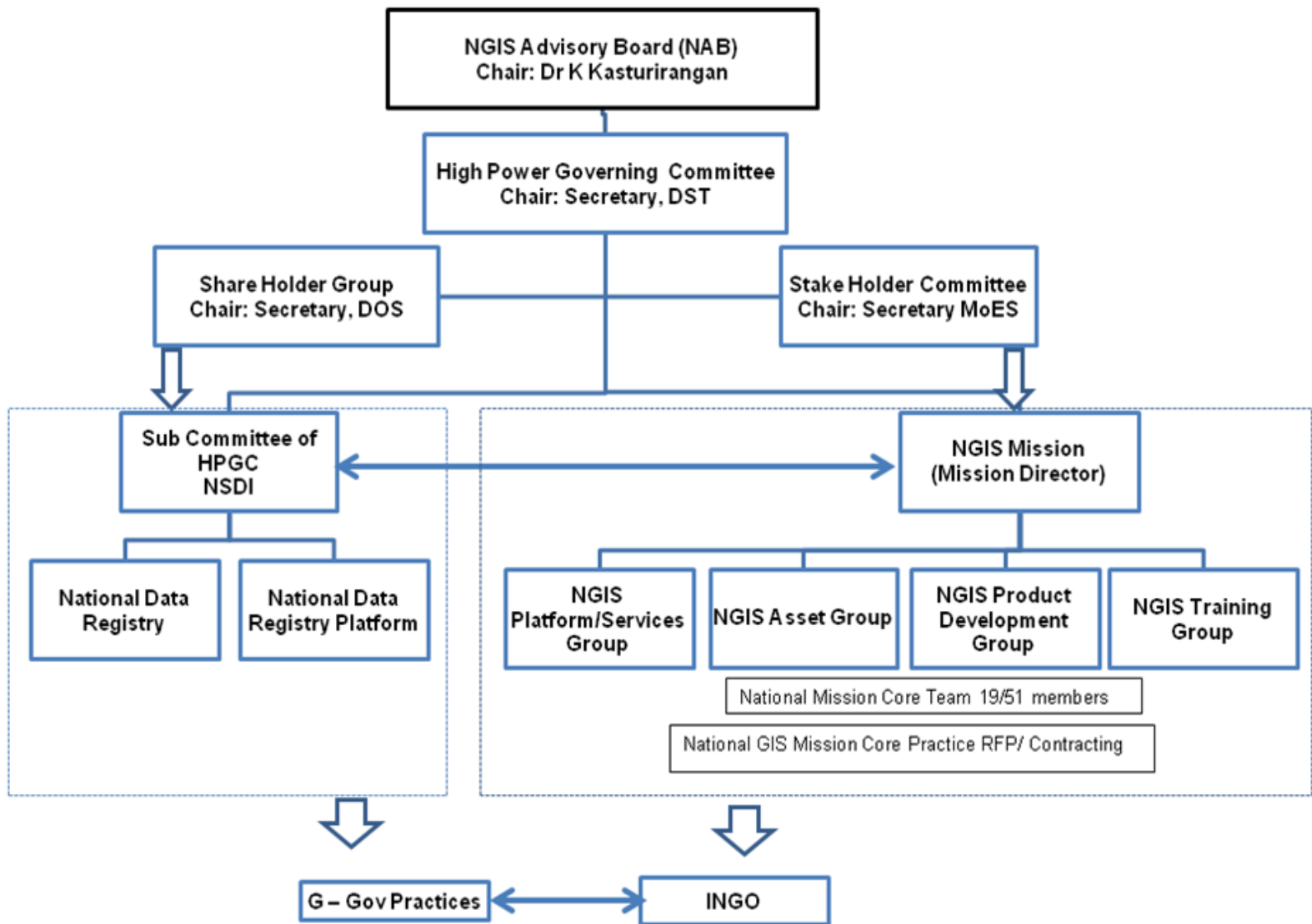
Theme

PARLI

LayerL

Banku
Distri

- IIT KGF
- Pol
- Hea
- Roa
- Rai
- Rive
- Gra
- AC
- PC



Partnering NSDI through NRDMS Programme (Indicative)

PAU, Ludhiana

NGE, D. Dum

CEERI, Pilani

HPRSAC Shimla

SoI/ NSDI, New Delhi
IIT Delhi

**Kumaon University, Nainital/ Almora
(Centre for NRDMS)**

NERIWALM, Tezpur

WALMI, Bhopal

JRSAC Ranchi

WBCSST, Kolkata
IIT Kharagpur

**Advanced Lab on
GISE, IIT Bombay**

NGRI, Hyderabad

KSCST, Bengaluru

**Kerala University, T' Puram
(Centre for GI Sc. & Tech.)**

Uttarakhand: 1 District +
West Bengal: 17 Districts
Karnataka: 29 Districts

State Geo Portal prototypes

- Karnataka
- West Bengal
- Uttarakhand
- Kerala
- The North East
- Kerala
- Haryana
- J & K
- NCT of Delhi

R & D Centers

- Kumaon Univ.
- Kerala Univ.
- Advanced Lab on GISE, IITB

Training at Kerala University for Kerala State Groundwater Board Staff (August 2009)



Issues

- Provision of standards-based WFS
- Web-based processing of apps
- Delivery of maps/ apps on web/ mobile devices
- Capacity Building of personnel/ outreach
- Collaborative mode of working – platform
- DST/ NSDI to incubate NGIS

Thank you!!!!

www.nrdms.gov.in

www.nsdiindia.gov.in

psa@nic.in

psanrdms@gmail.com